



Wimberley 46

San Marcos, TX | 46 +/- AC



BURGER·RAY
RANCH GROUP



Wimberley 46

Hays County | 46 +/- AC

Property Description

Nestled within the heart of the hill country, you will discover an exceptional 46-acre canvas of potential, just a short 4-mile drive from lively Wimberley Square. Offering easy road access to prime building sites with stunning hill country views, this property opens the door to endless opportunities. Conveniently located within an hour's drive from both Austin and San Antonio, it is the perfect retreat.

Two seasonal creeks meander through the property, revealing exposed limestone features that add character to this natural landscape. Investing in acreage of this size is an increasingly rare opportunity.

Improvements

The property is largely unimproved, awaiting your vision for the future.

Location

Located just four miles south of Wimberley Square, with an easily accessible frontage on RR12, this location offers a convenient lifestyle. Enjoy quick trips to neighboring towns and amenities in San Marcos, Driftwood, Blanco, or New Braunfels. A boat ramp on Canyon Lake is also conveniently located just 12.5 miles from the front gate.

Land

This property is what makes the Wimberley area special, with its striking beauty and diverse landscapes, including rocky terrain and lush valleys. Majestic oak and cedar trees create a canopy of greenery that provides respite from the Texas sun.

Water

The two seasonal creeks meander northward through the hills, eventually converging at a midpoint on the acreage. These waterways feature exposed limestone that add character to the landscape. In times of flow, multiple locations on the property create waterfalls.

Terrain/Topography

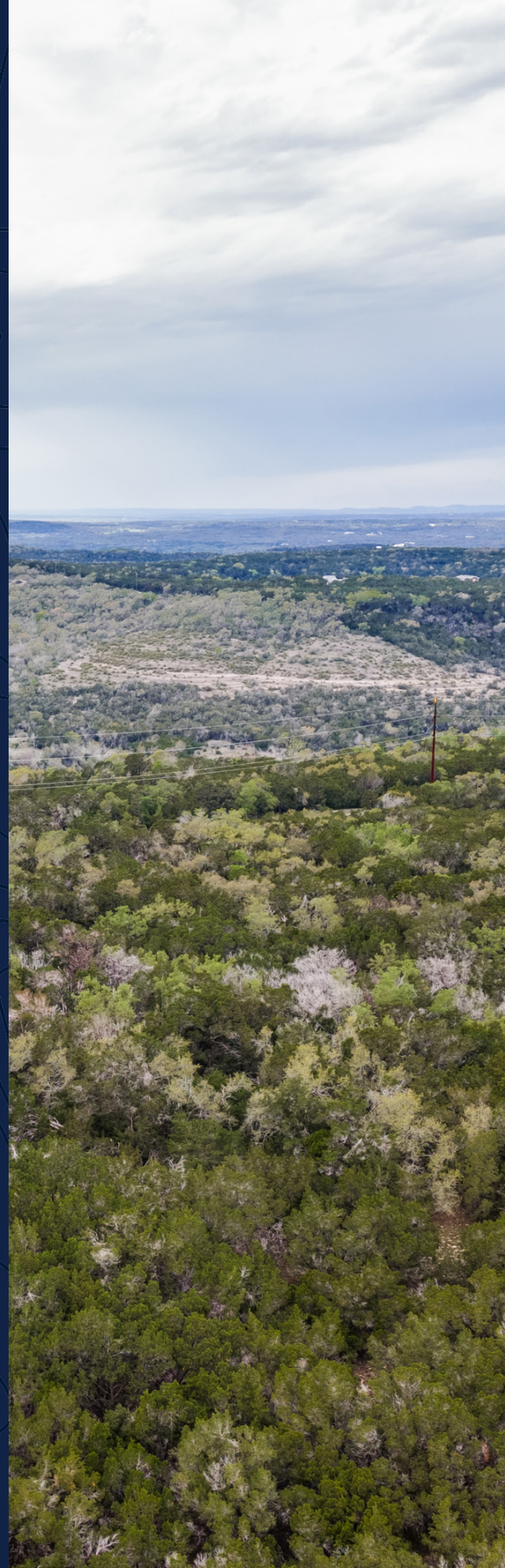
The property's elevation ranges from approximately 1,200 feet above sea level at the southeastern end to 1,000 feet above sea level to the northwest, providing potential building sites with great views and lovely sunset vistas down the valley created by the creeks.

Recreation/Hunting

This area is home to abundant wildlife, including deer, turkey, and a variety of bird species, making it a haven for nature enthusiasts and a tranquil escape.

Minerals

Consult broker for more information.









Our Team

Grass-Roots Presence, With a Global Reach

The team at Burgher Ray Ranch Group has the network and knowledge of the real estate markets throughout Texas and Arkansas, and simultaneously has the ability to market their client's properties internationally. Burgher Ray listings are seen around the world.



DAVIS WALKER

Ranch Sales Agent
dwalker@briggsfreeman.com



DAVID BURGHER

Principal | Broker Associate
dburgher@briggsfreeman.com



HARLAN RAY

Principal | Broker Associate
hray@briggsfreeman.com

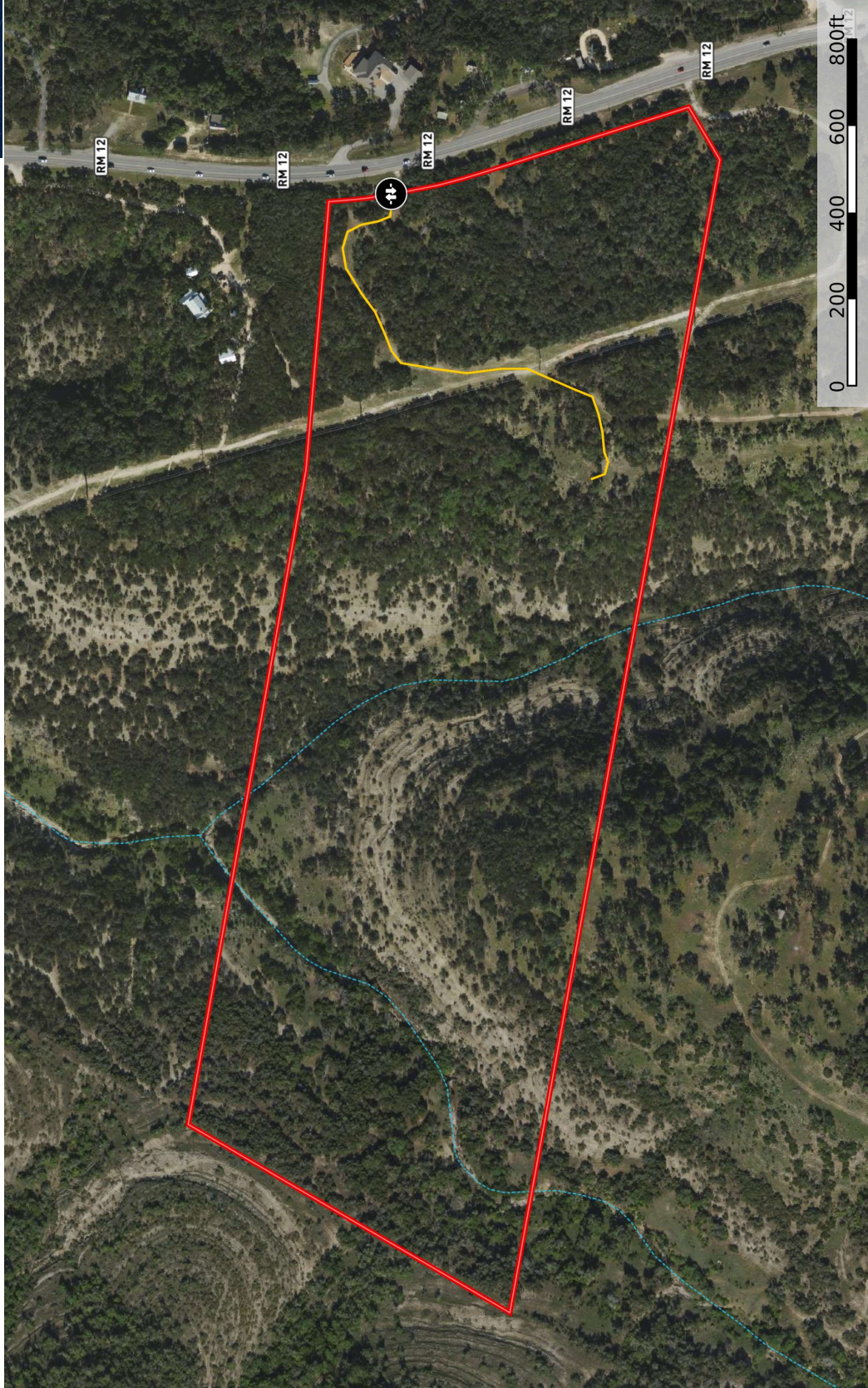
Contact Us

-  burgherray.com
-  (214) 353-6601
-  3131 Turtle Creek Blvd, 4th Floor
Dallas, TX 75219



Aerial Map

Wimberley_46
Texas, AC +/-



Topographic Map

Wimberley_46
Texas, AC +/-

