



Red Hill Ranch

Gonzales County, TX | 255 +/- AC



BURGHER·RAY
RANCH GROUP

A close-up photograph of a person's hands holding a large, freshly caught bass fish. The fish is held vertically, showing its head, open mouth, and scales. The person is wearing a blue watch and a light-colored shirt. The background is a blurred outdoor setting, likely near a fishing pond.

Red Hill Ranch

Gonzales County, TX | 255 +/- AC

Property Description

Red Hill Ranch offers 255+/- acres of prime Texas ranchland, blending everything this iconic region has to offer. Upon entering through the front gate, you are greeted by the unique ironstone soil along a rolling ridge and sweeping views across the ranch. To the east, you will find rolling rangeland, cattle grazing, and a fishing pond with a lively bass population. To the west, O'Neal Creek meanders through the property, providing a perfect corridor and cover for wildlife.

Property History

The property has been in the same family since the early 1900's, and is for the first time being offered for sale by the family.

Improvements

This ranch is raw and unimproved, offering a blank canvas for your vision. Two gated entrances, cattle pens, and well-maintained fencing are in place.

Location

Conveniently situated just over an hour from both San Antonio and Austin, and two and a half hours from Houston. The Ranch provides easy access to the nearby towns of Nixon, Gonzales, and Seguin.

Land

Red Hill Ranch features a wonderful mix of open pasture, scattered native trees and brush, along with creek bottom diversity. The sought-after sandy soil here is ideal for raising cattle and produces rich seed-bearing grass for dove and quail.

Water

Water abounds at Red Hill Ranch. A fishing pond, slightly over an acre in size, provides excellent bass fishing, while approximately 3,442 feet of O'Neal Creek winds its way through the heart of the property. Additionally, a smaller tributary adds another ~3,106 feet of creek frontage, enhancing the ranch's water features and wildlife habitat.

Terrain/Topography

From the red stone ridge to the creek bottom below, the ranch offers a pleasant 60 feet of elevation change. The bottomland areas cutting through the ranch creates panoramic views. In the lowlands, towering trees provide ample shade for wildlife, while the pastures feature rolling hills perfect for grazing.

Recreation/Hunting

This property is ideal for outdoor enthusiasts. The diversity in habitat and abundance of water makes it a wildlife haven. Whitetail, turkey, hogs, dove and quail all call the ranch home, with the bass pond providing year-round appeal.

Minerals

None









Our Team

Grass-Roots Presence, With a Global Reach

The team at Burgher-Ray Ranch Sales has the network and knowledge in several local markets, and simultaneously has the ability to market their clients' properties internationally. Burgher-Ray listings are seen around the world.



DAVIS WALKER

Ranch Sales Agent
dwalker@briggsfreeman.com



HARLAN RAY

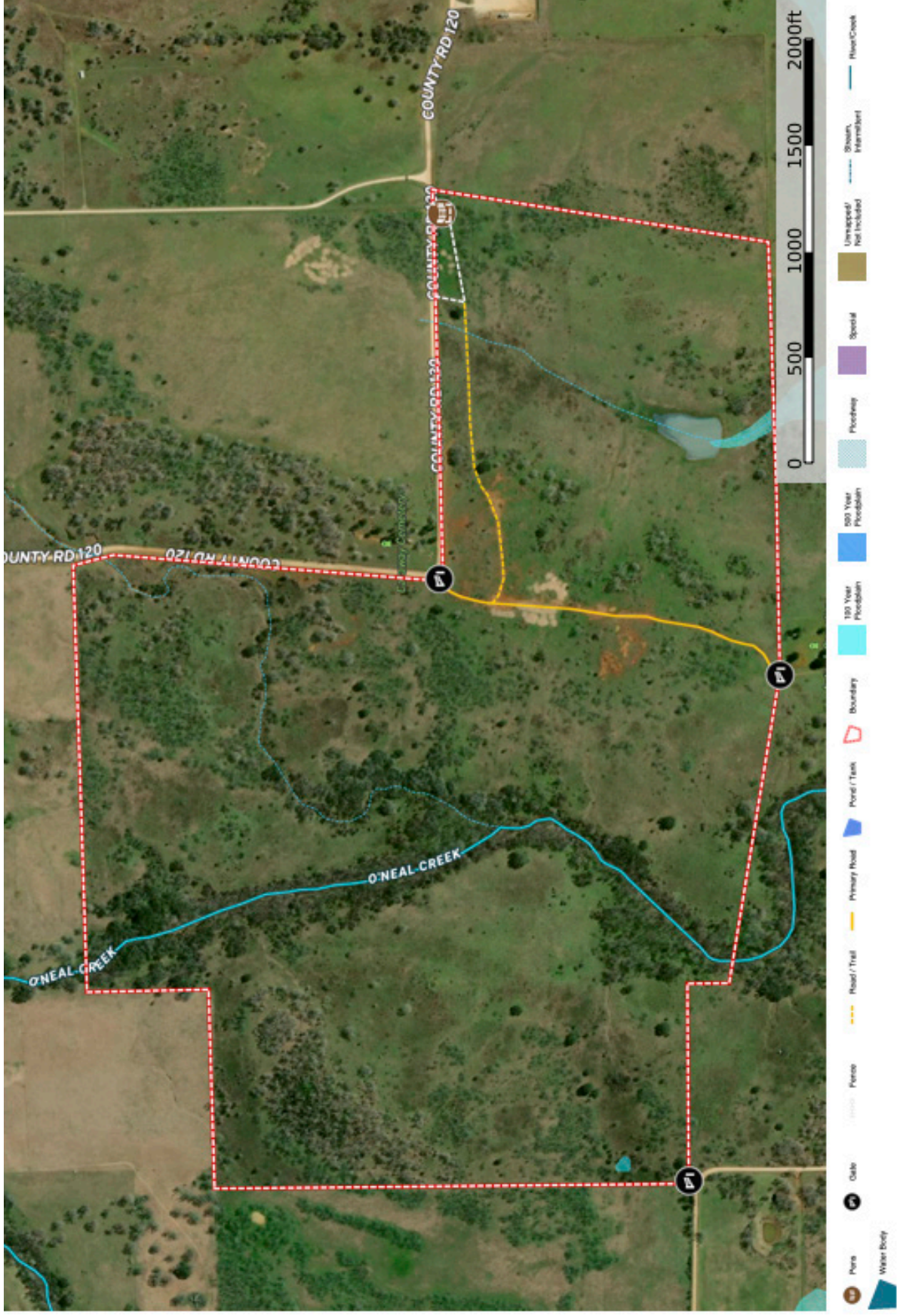
Principal | Broker Associate
hray@briggsfreeman.com

Contact Us

- 🌐 burgherray.com
- ☎️ (214) 353-6601
- 📍 3131 Turtle Creek Blvd, 4th Floor
Dallas, TX 75219



Aerial Map



Topographic Map

